

JVC

SCHEMATIC DIAGRAMS

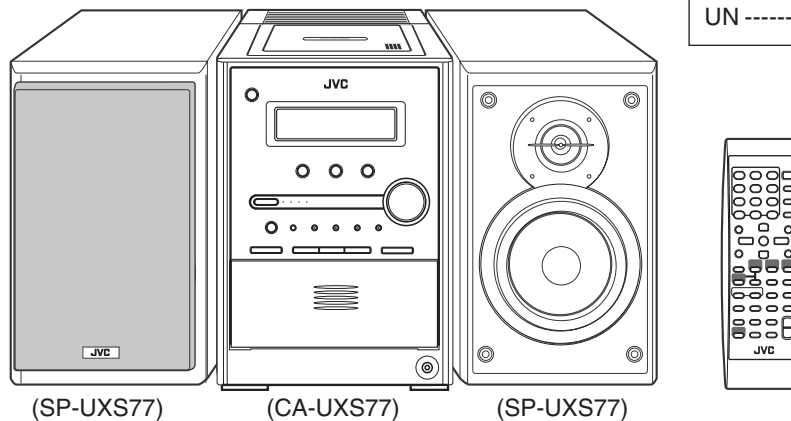
COMPACT COMPONENT SYSTEM

UX-S77

CD-ROM No.SML200405

Area suffix

A	-----	Australia
US	-----	Singapore
UW	-----	Brazil, Mexico, Peru
UX	-----	Saudi Arabia
UJ	-----	U.S. Military
UN	-----	Asean



(SP-UXS77)

(CA-UXS77)

(SP-UXS77)



(Except US/UN)

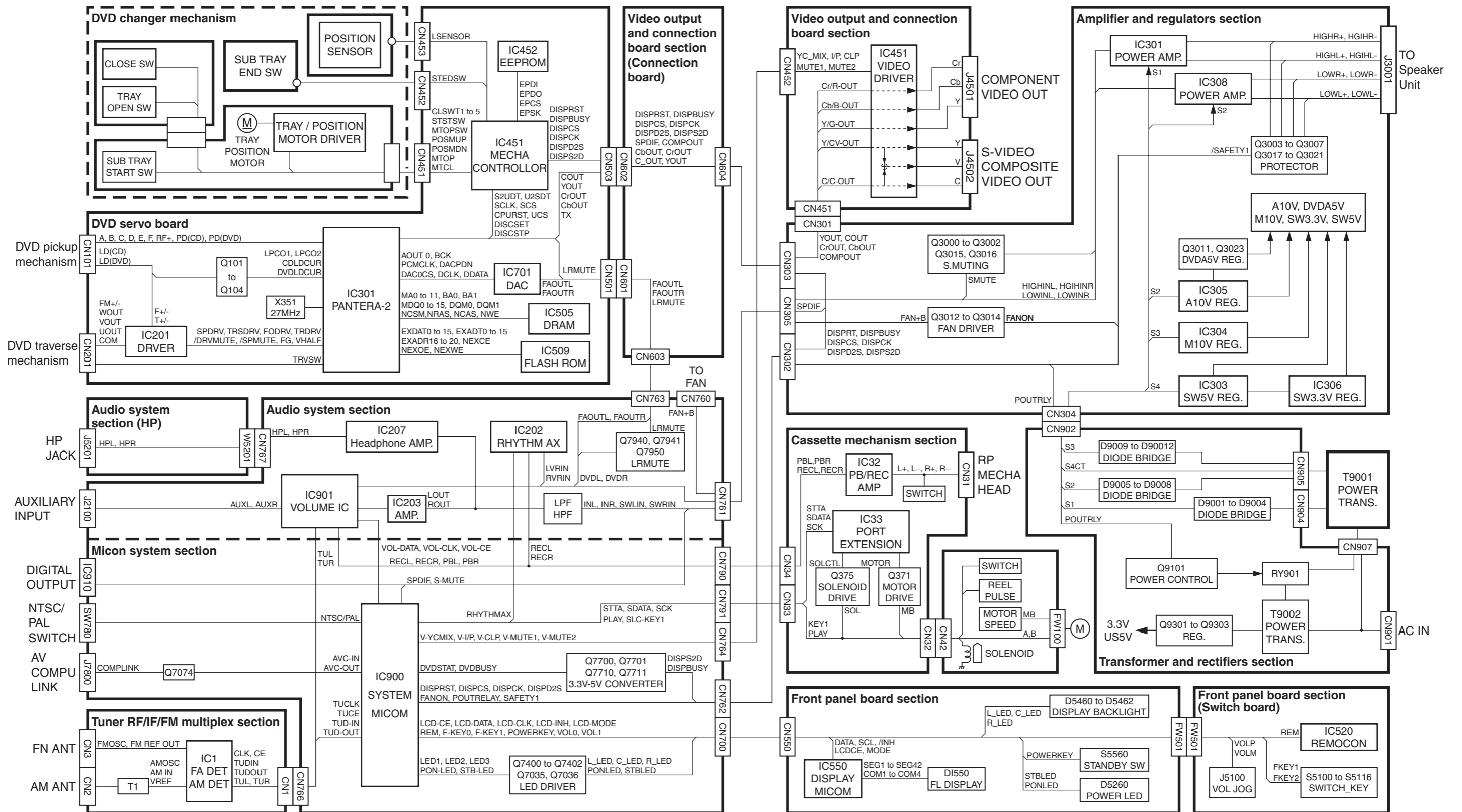
Contents

Block diagram	-----	2-1
Standard schematic diagrams	-----	2-2 to 12
Printed circuit boards	-----	2-13 to 16

In regard with component parts appearing on the silk-screen printed side (parts side) of the PWB diagrams, the parts that are printed over with black such as the resistor (■), diode (⬤) and ICP (●) or identified by the "▲" mark nearby are critical for safety.

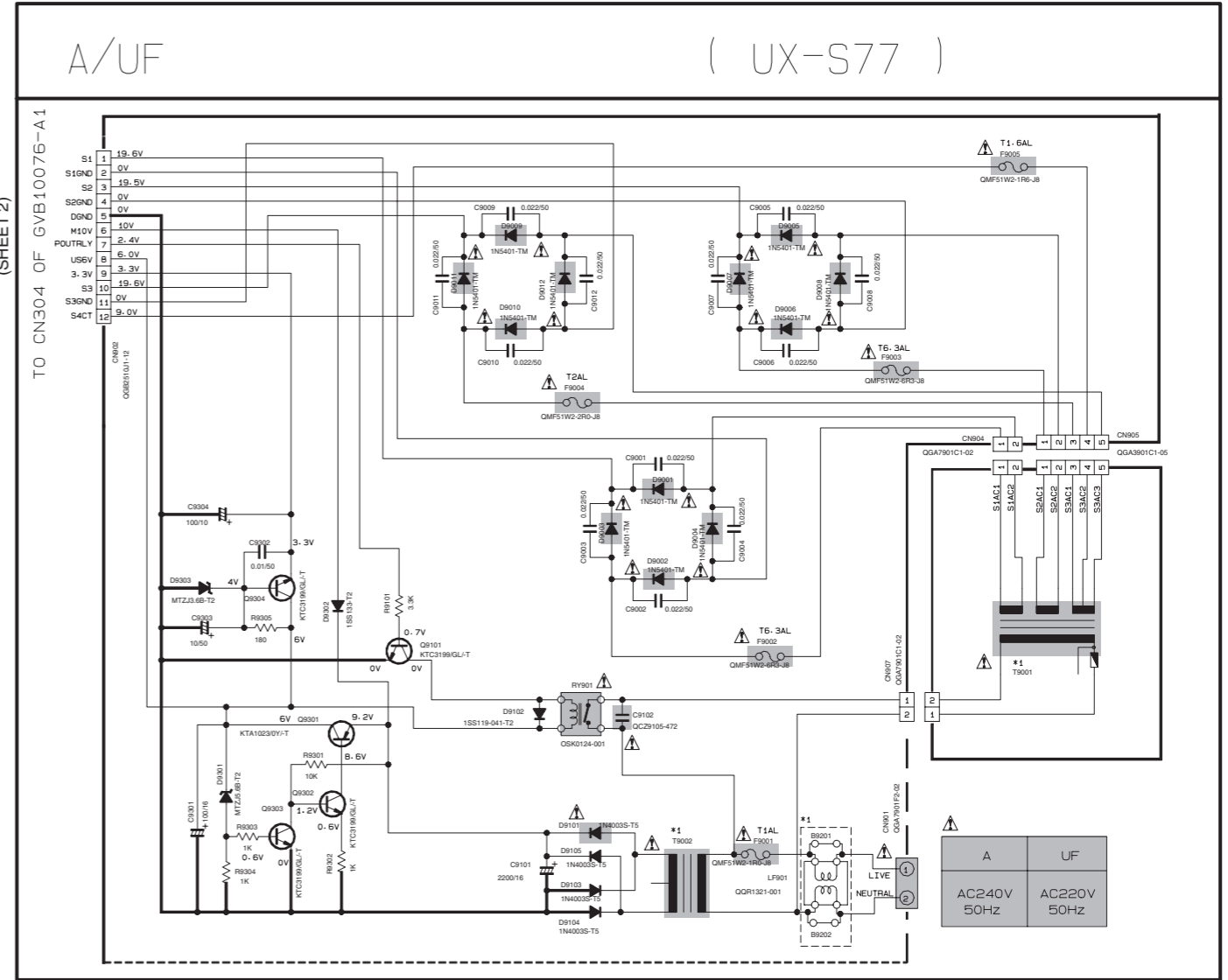
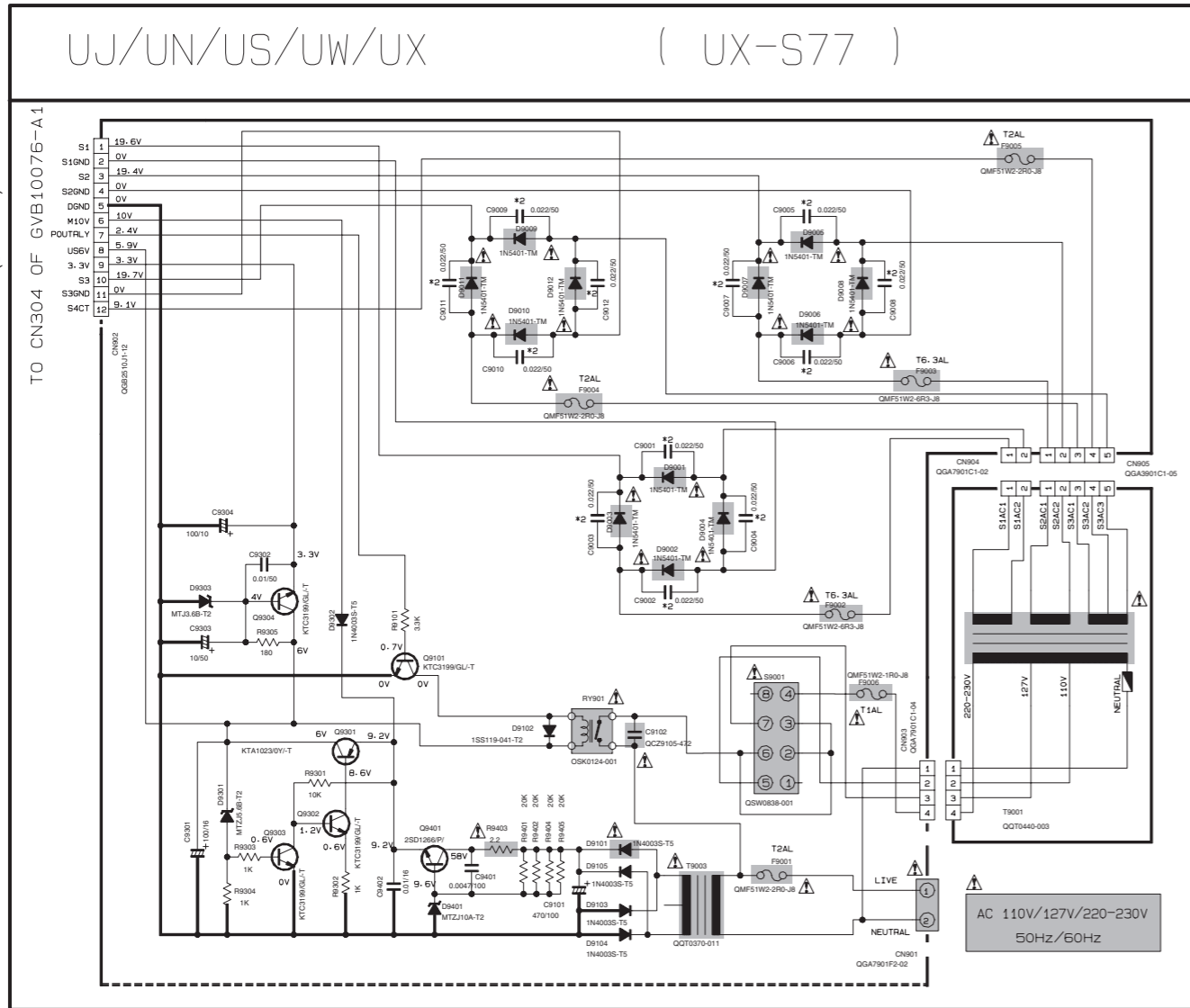
(This regulation does not correspond to J and C version.)

Block diagram



Standard schematic diagrams

Transformer and rectifiers section



Parts are safety assurance parts.
When replacing those parts make sure to use the specified one.

GVB10076-A2

SHEET NUMBER	CIRCUITS DESCRIPTION
1	TRANSFORMER AND RECTIFIERS
2	AMPLIFIER AND REGULATORS
3	MICON SYSTEM
4	AUDIO SYSTEM
5	FRONT PANEL BOARD
6	VIDEO OUTPUT AND CONNECTION BOARD
7	TAPE MECHANISM
8	DVD MODULE (1/2)
9	DVD MODULE (2/2)
10	TUNER RF/IF/FM MULTIPLEX (UJ/UN/US/UW/UX)
11	TUNER RF/IF/FM MULTIPLEX (A only)

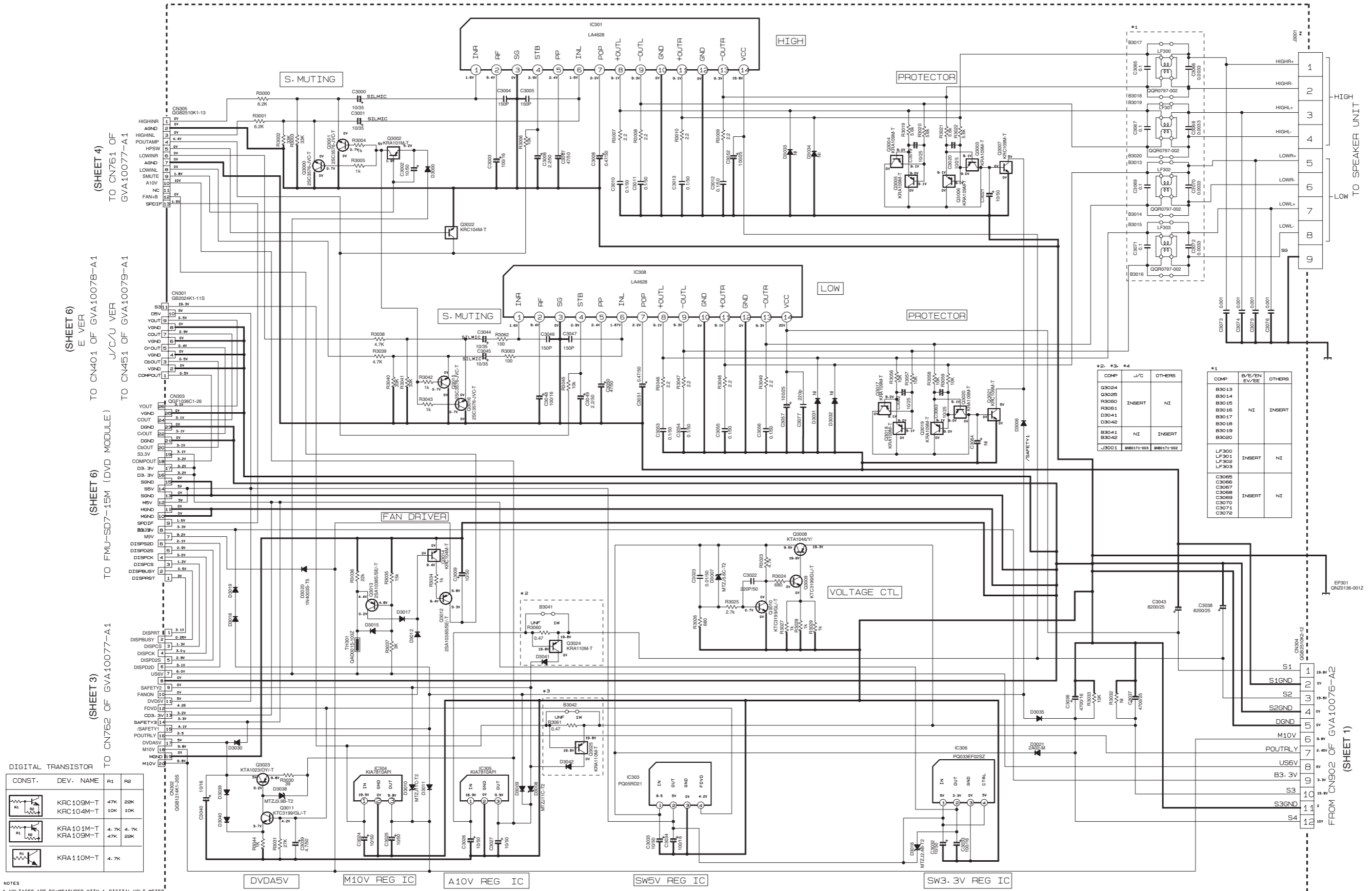
VERSION CODES
B : U.K.
E : CONTINENTAL EUROPE
EN : NORDIC COUNTRIES
EV : EASTERN EUROPE
EE : RUSSIA
J : U.S.A.
C : CANADA
A : AUSTRALIA
UF : CHINA
UJ : US ARMY
UN : INDONESIA
US : SINGAPORE
UW : SOUTH AMERICA
UX : ARAB SAUDI

NOTES
 1. VOLTAGES ARE DC-MEASURED WITH A DIGITAL VOLT METER OR OSCILLOSCOPE WITHOUT INPUT SIGNAL. CONDITION --- DVD STOP MODE
 2. UNLESS OTHERWISE SPECIFIED:
 ALL RESISTORS ARE 1/4W ± 5% CARBON FILM RESISTOR OR 0.063W ± 5% THICK FILM CHIP RESISTOR
 ALL CAPACITORS ARE CERAMIC CAPACITOR OR MYLAR CAPACITOR.

ALL RESISTANCE VALUES ARE IN OHM (Ω).
 ALL CAPACITANCE VALUES ARE IN μF (PpF).
 ALL E-CAPACITORS ARE SHOWN IN THE FORM OF CAPACITANCE (μF/RATED VOLTAGE (V)).
 ALL INDUCTANCE VALUES ARE IN mH (mH).
 ALL DIODES ARE 1SS119-041-T2
 ALL FERRITE BEADS ARE QGR0621-001Z

COMP.	B/E/EN/EV	A	UF
T9001	GGT0440-002	GGT0440-004	GGT0440-005
T9002	GGT0253-002	GGT0253-002	GGT0253-003
LF901	GGR1321-001	NI	NI
B9201	NI	INSERT	INSERT
B9202	NI	INSERT	INSERT

Amplifier and regulators section



DIGITAL TRANSISTOR

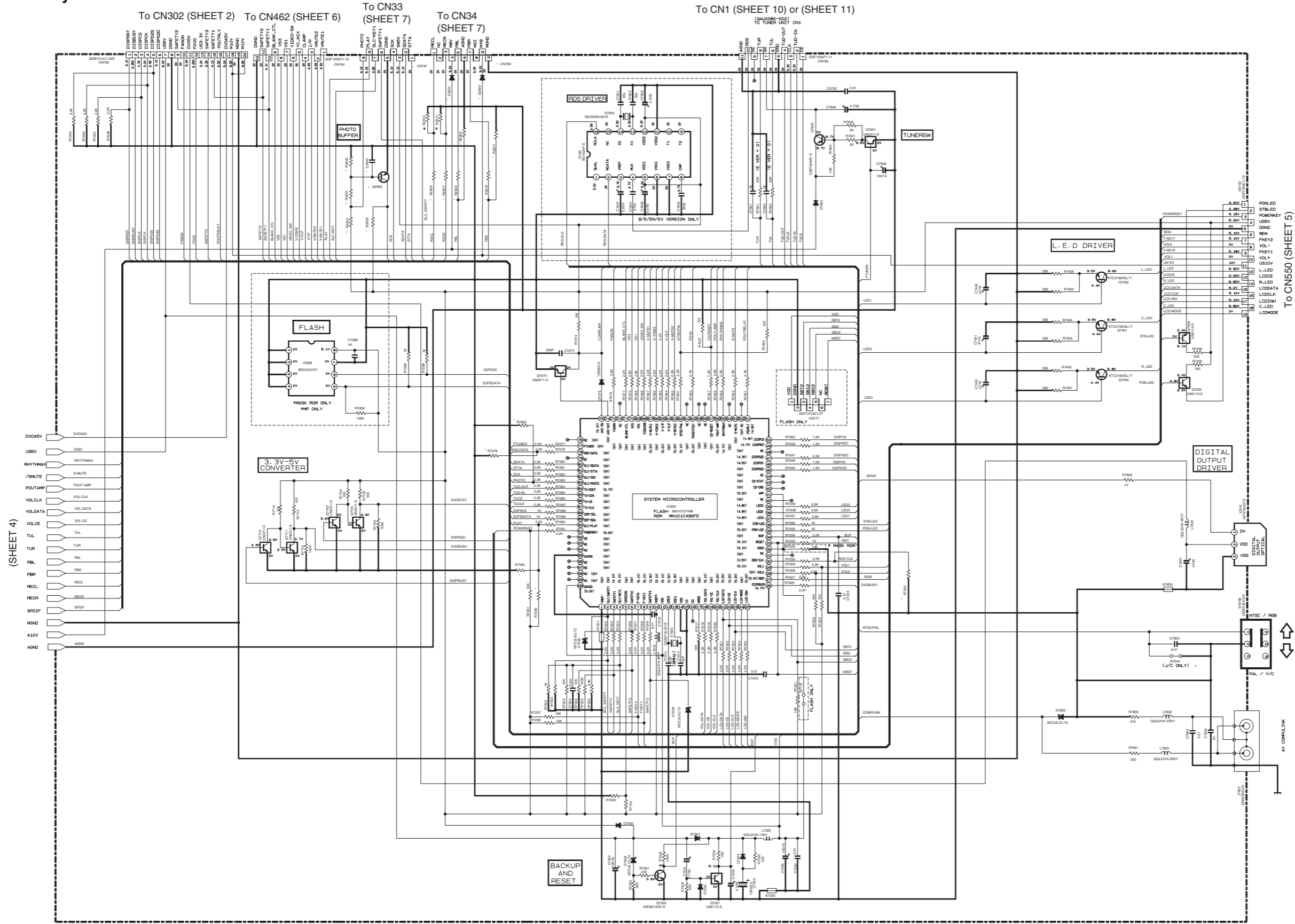
CONST.	DEV. NAME	R1	R2
	KRC109M-T	47K	28K
	KRC104M-T	10K	10K
	KRA101M-T	4.7K	4.7K
	KRA109M-T	47K	28K
	KRA110M-T	4.7K	

NOTES
 1: VOLTAGES ARE DC-MEASURED WITH A DIGITAL VOLT METER.
 OR OSCILLOSCOPE WITHOUT INPUT SIGNAL.
 CONDITION: DVD STOP MODE
 2: UNLESS OTHERWISE SPECIFIED,
 RESISTORS ARE 1/4W ±5% CARBON RESISTOR.
 ALL RESISTANCE VALUES ARE IN OHMS (Ω).
 ALL CAPACITORS ARE CERAMIC CAPACITOR OR MYLAR CAPACITOR.
 ALL CAPACITANCE VALUES ARE IN pF (pF).
 ALL INDUCTANCE VALUES ARE IN mH (mH).
 ALL E-CAPACITORS ARE SHOWN IN THE FORM OF CAPACITANCE (μF)/RATED VOLTAGE (V).
 ALL DIODE USE 18S119-041-T2.

COMP	J/C	OTHERS
B3004		
B3005		
B3006	INSERT	NI
B3007		
B3008		
B3009		
B3010		
B3011		
B3012		
B3013		
B3014		
B3015		
B3016		
B3017		
B3018		
B3019		
B3020		
B3021		
B3022		
B3023		
B3024		
B3025		
B3026		
B3027		
B3028		
B3029		
B3030		
B3031		
B3032		
B3033		
B3034		
B3035		
B3036		
B3037		
B3038		
B3039		
B3040		
B3041		
B3042		
B3043		
B3044		
B3045		
B3046		
B3047		
B3048		
B3049		
B3050		
B3051		
B3052		
B3053		
B3054		
B3055		
B3056		
B3057		
B3058		
B3059		
B3060		
B3061		
B3062		
B3063		
B3064		
B3065		
B3066		
B3067		
B3068		
B3069		
B3070		
B3071		
B3072		

GVB10076-A1

Micon system section



R/Down RESISTOR	VERSION
R720 (10K)	J/C/A/F/U SERIES
R728 (10K)	J/C/A/F/U SERIES
R7502 (10K)	J/C/A/F/E SERIES
R7583 (10K)	J/C/A/F/E SERIES
R7990 (10K)	J/C/A/F/E SERIES

PART NO. FOR S/C CIRCUIT		
PART	VERSION	
R7200	10K	
CN790	09F1205F1-10	
CN791	09F1205F1-09	
R8200	100K	
R8201	390K	
R8202	82K	
R8203	82K	
R8206	1K	A/U/W/U/S/U/W/U/X
R8207	1K	
R8208	1K	
R8209	100K	
R8210	1K	
R8211	100K	
R8216	1.5K	
R8217	1.5K	
C2900	0.01	
G8200	020241K/R/-X	
D8200	1N4003-15	
C2901	1S5119-041-T2	

TO CN150 (SHEET 5)

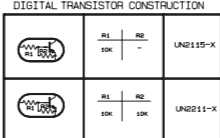
NTSC/PAL U VERSION
R8B/Y/C E VERSION

1/2

GVB10077-A1

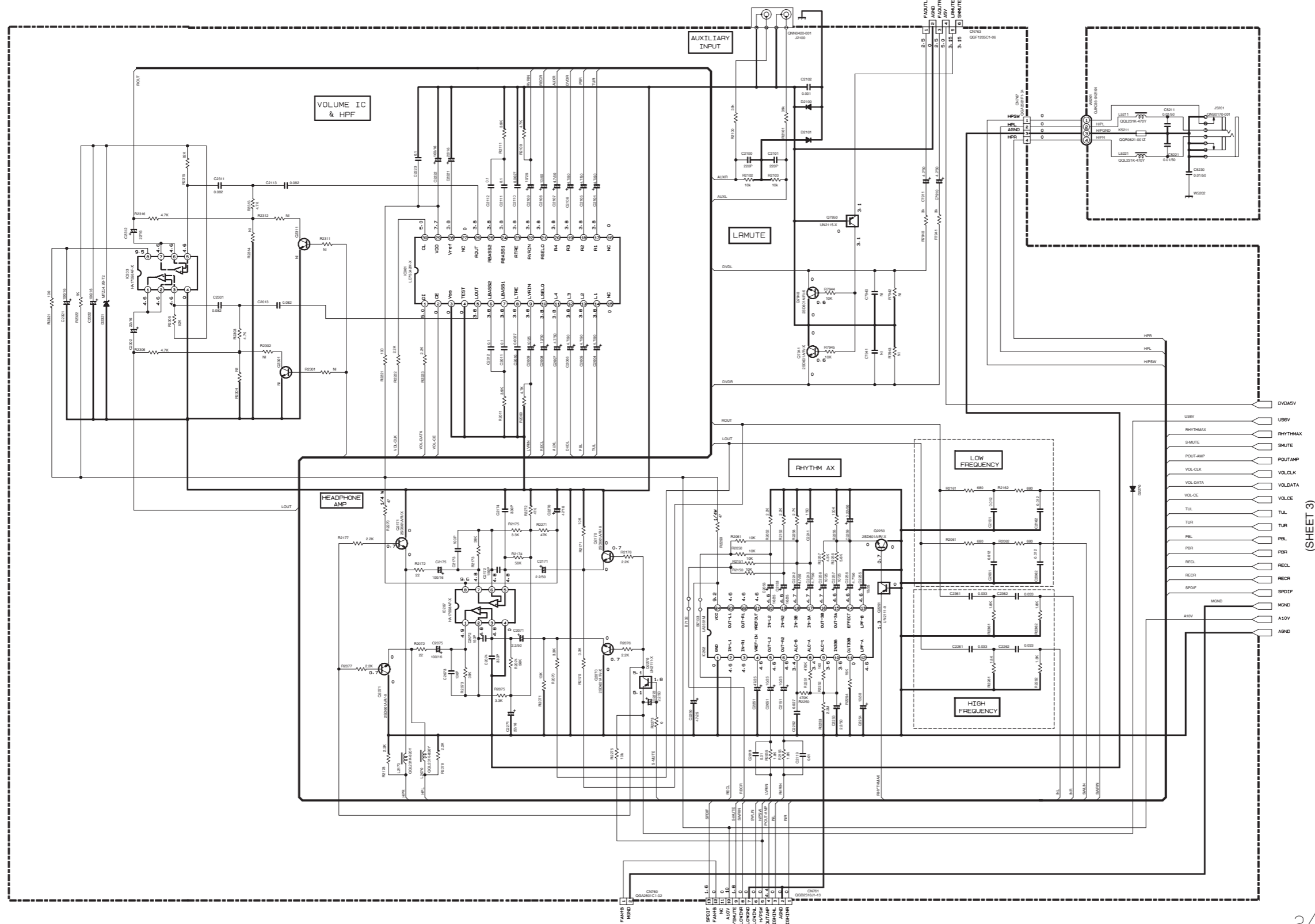
VERSION CONTROL RESISTOR	J/J/C	UF	UM	LX	US(US/AN/U)	A	E(B/E/EE/EN/EV)
R7005	10K	2K	4.7K	9.1K	20K	47K	-
R7755	-	10K	10K	10K	10K	10K	10K

NOTES
 1. VOLTAGES ARE DC-MEASURED WITH A DIGITAL VOLT METER OR OSCILLOSCOPE WITHOUT INPUT SIGNAL. CONDITION — DC STOP MODE.
 2. UNLESS OTHERWISE SPECIFIED:
 ALL RESISTORS ARE 1/4W ± 5% CARBON FILM RESISTOR OR 0.063W 45X THICK FILM CHIP RESISTOR.
 ALL CAPACITORS ARE CERAMIC CAPACITOR OR MYLAR CAPACITOR.
 ALL RESISTANCE VALUES ARE IN OHM (Ω). ALL CAPACITANCE VALUES ARE IN μF(μF). ALL E-CAPACITORS ARE SHOWN IN THE FORM OF CAPACITANCE (μF/RATED VOLTAGE [V]). ALL INDUCTANCE VALUES ARE IN μH(μH). ALL DIODES ARE 1S5119-041-T2. ALL FERRITE BEADS ARE GDR0621-001Z.



Audio system section

(SHEET 6)



(SHEET 3)

To CN305 (SHEET 2)

2/2

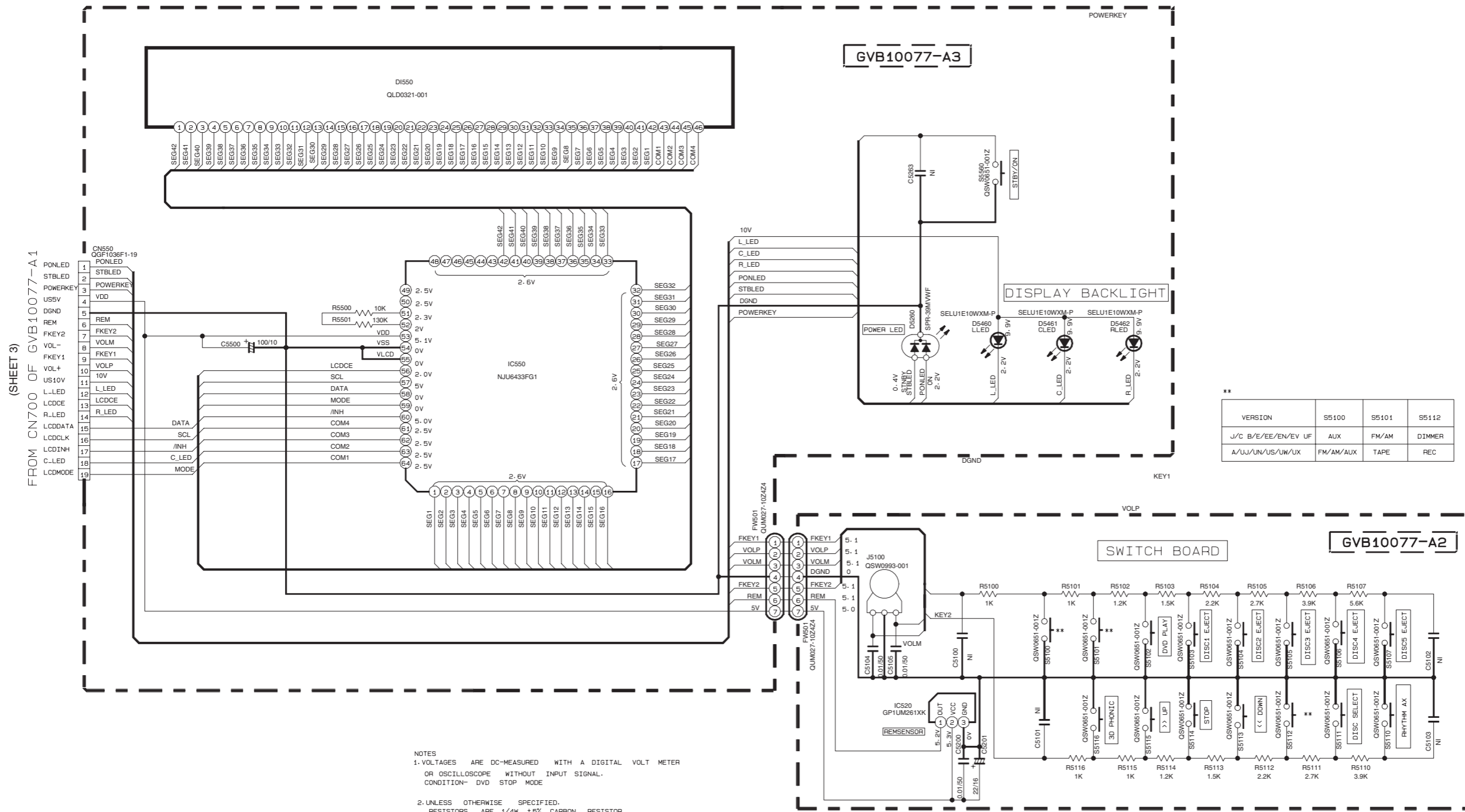
GVB10077-A1

DIGITAL TRANSISTOR CONSTRUCTION

	R1	10K	UN2111-X
	R1	10K	UN2111-X
	R1	10K	UN2111-X
	R1	10K	UN2111-X

NOTES
 1. VOLTAGES ARE DC-MEASURED WITH A DIGITAL VOLT METER OR OSCILLOSCOPE WITHOUT INPUT SIGNAL. CONDITION: DVD STOP MODE.
 2. UNLESS OTHERWISE SPECIFIED, ALL RESISTORS ARE 1/4W ± 5% CARBON FILM RESISTOR OR 0.062W ± 5% THICK FILM CH13D RESISTOR. ALL CAPACITORS ARE CERAMIC CAPACITOR OR MYLAR CAPACITOR.
 ALL RESISTANCE VALUES ARE IN OHM(S). ALL CAPACITANCE VALUES ARE IN μF(F)ORPF(PF). ALL C-CAPACITORS ARE SHOWN IN THE FORM OF CAPACITANCE(F)RATED VOLTAGE (V). ALL INDUCTANCE VALUES ARE IN mH(mmh). ALL DIODES ARE 1SS119-041-72. ALL FERRITE BEADS ARE GQR0621-0012.

■ Front panel board section



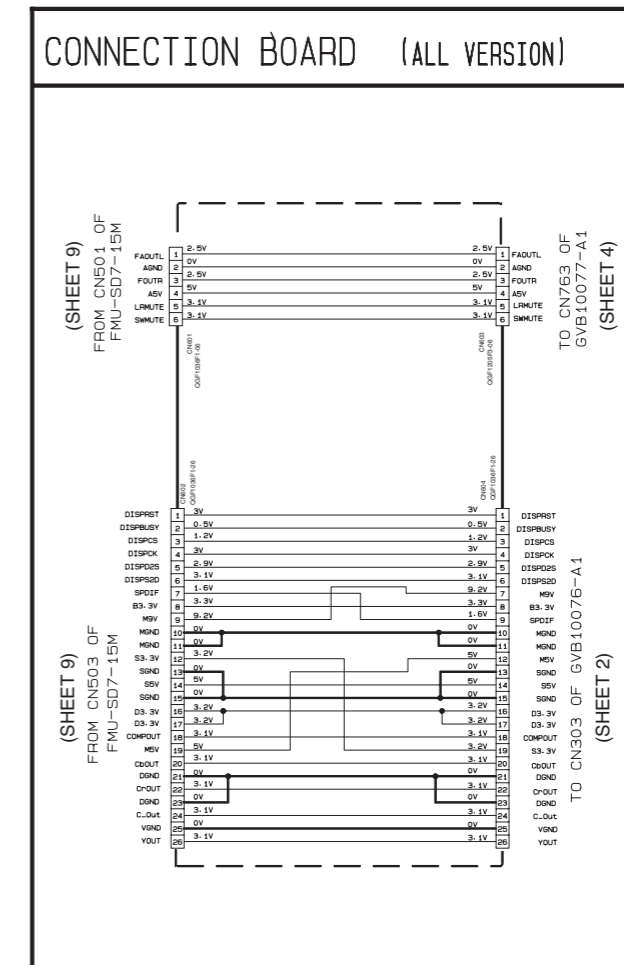
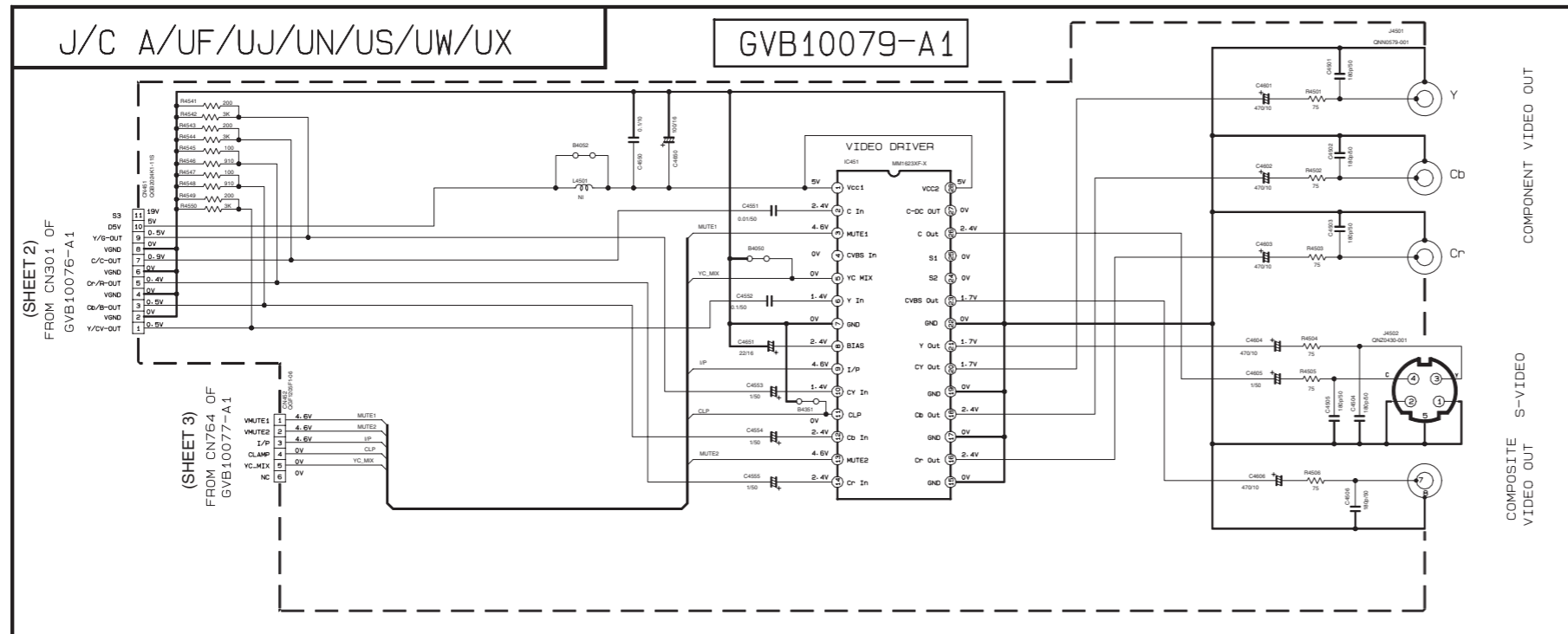
**

VERSION	S5100	S5101	S5112
J/C	B/E/EE/EN/EV UF	AUX	FM/AM DIMMER
A/UJ/UN/US/UW/UX	FM/AM/AUX	TAPE	REC

NOTES

1. VOLTAGES ARE DC-MEASURED WITH A DIGITAL VOLT METER OR OSCILLOSCOPE WITHOUT INPUT SIGNAL. CONDITION- DVD STOP MODE
2. UNLESS OTHERWISE SPECIFIED. RESISTORS ARE 1/4W ±5% CARBON RESISTOR. ALL RESISTANCE VALUES ARE IN OHM (Ω). ALL CAPACITORS ARE CERAMIC CAPACITOR OR MYLAR CAPACITOR. ALL CAPACITANCE VALUES ARE IN #F(P=pF). ALL INDUCTANCE VALUES ARE IN #H(m=mH). ALL E-CAPACITORS ARE SHOWN IN THE FORM OF CAPACITANCE (#F)/RATED VOLTAGE (V).

Video output and connection board section

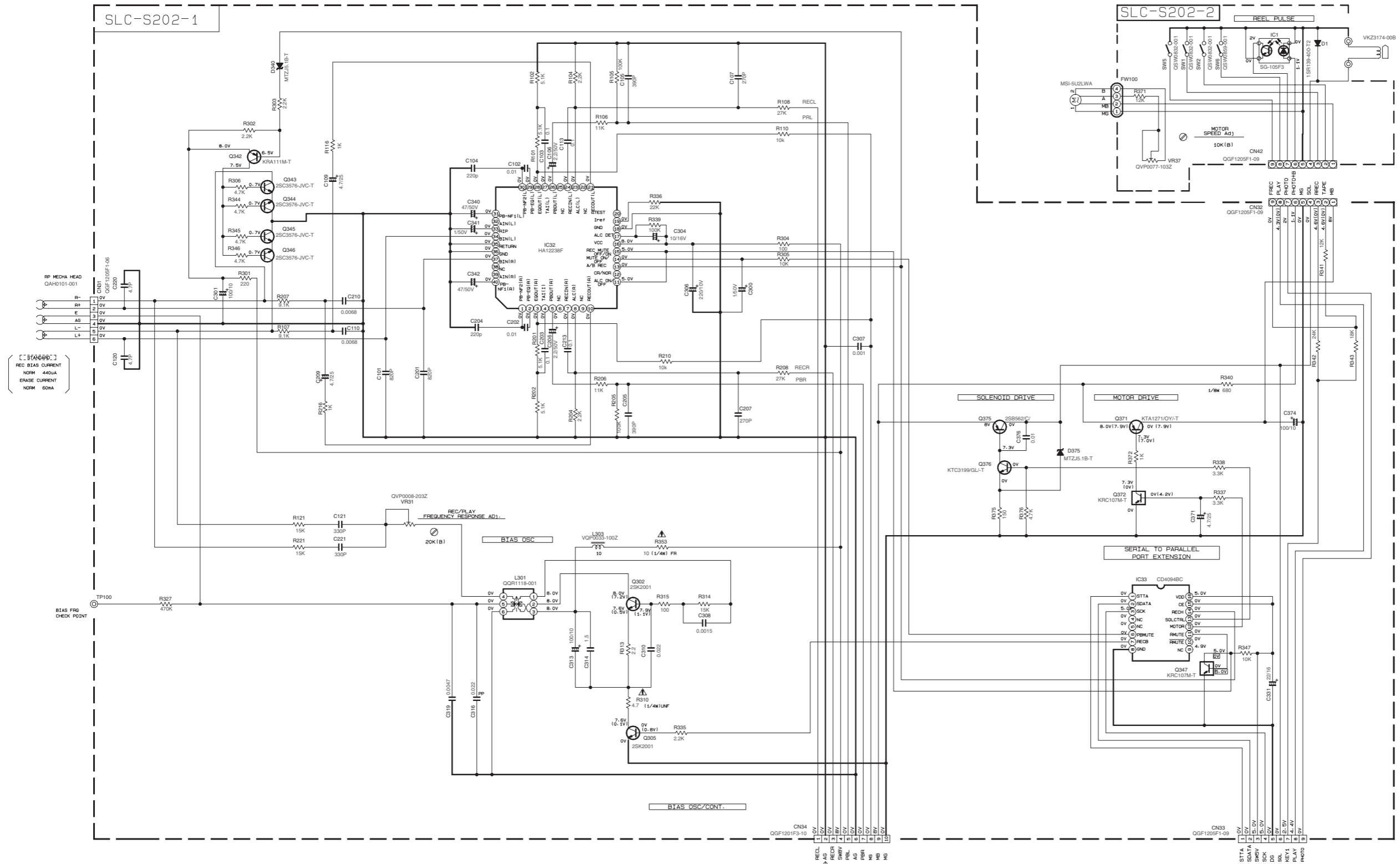


DIGITAL TRANSISTOR

	R1	R2
KRC102M-T	10K	10K
KRA102M-T	10K	10K

NOTES
 1. VOLTAGES ARE DC-MEASURED WITH A DIGITAL VOLT METER OR OSCILLOSCOPE WITHOUT INPUT SIGNAL. CONDITION --- DVD STOP MODE.
 2. UNLESS OTHERWISE SPECIFIED.
 ALL RESISTORS ARE 1/4W ± 5% CARBON FILM RESISTOR OR 0.063W ± 5% THICK FILM CHIP RESISTOR.
 ALL CAPACITORS ARE CERAMIC CAPACITOR OR MYLAR CAPACITOR.
 ALL RESISTANCE VALUES ARE IN OHM(Ω).
 ALL CAPACITANCE VALUES ARE IN μF(P=PF).
 ALL E-CAPACITORS ARE SHOWN IN THE FORM OF CAPACITANCE(μF)/RATED VOLTAGE (V).
 ALL INDUCTANCE VALUES ARE IN μH(m=MH).
 ALL DIODES ARE 1SS119-041-T2.
 ALL FERRITE BEADS ARE GGR0621-001Z.

■ Tape mechanism section



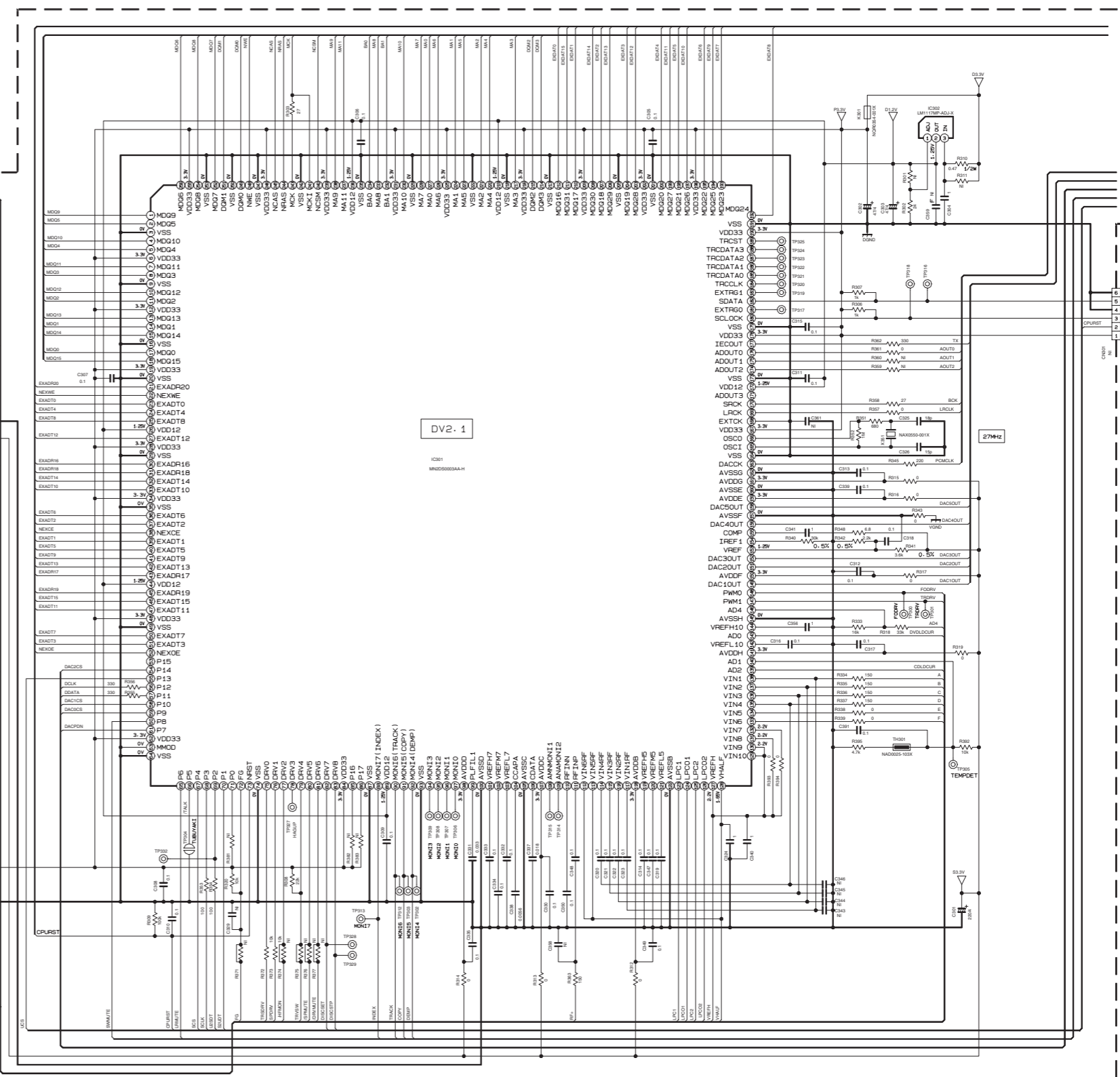
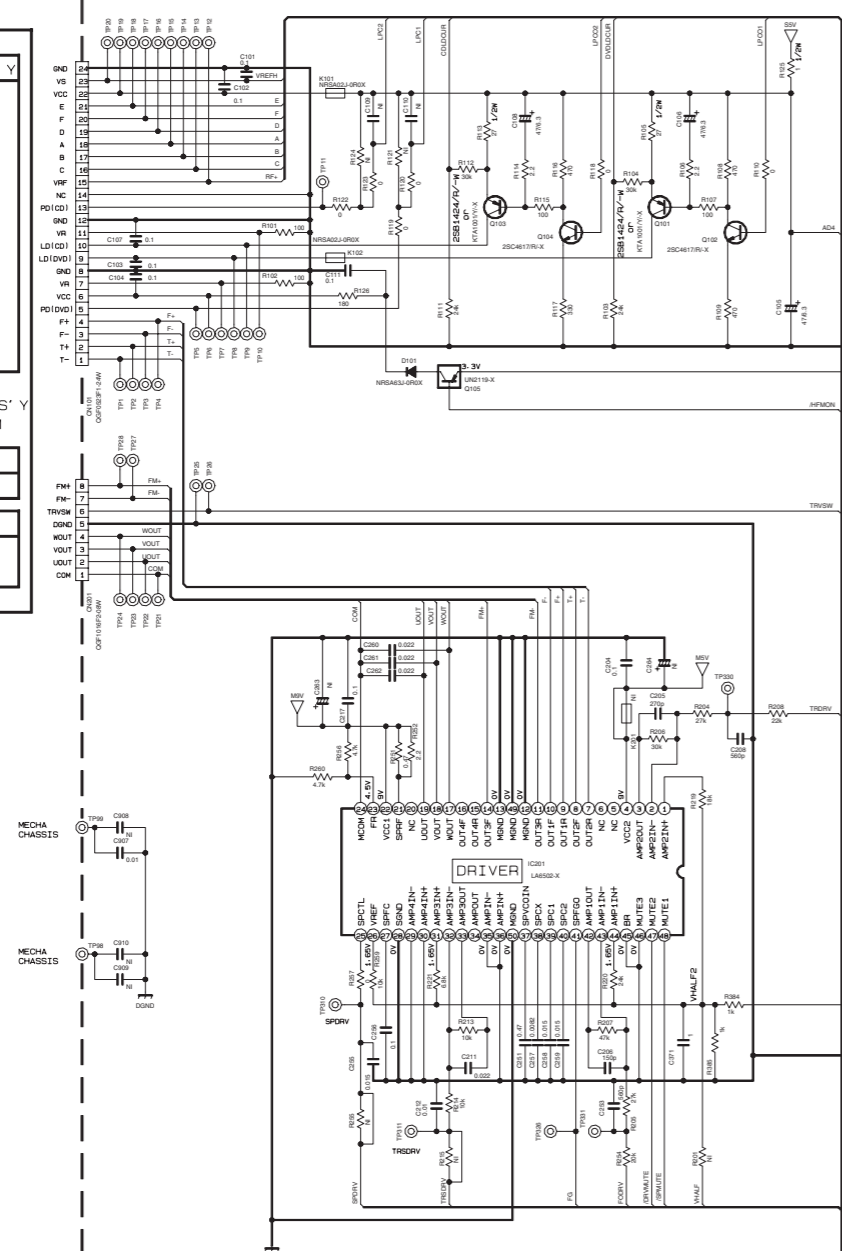
NOTES

- VOLTAGES ARE DC-MEASURED WITH A DIGITAL VOLT METER OR OSCILLOSCOPE WITHOUT INPUT SIGNAL. CONDITION - MECHA STOP MODE
- UNLESS OTHERWISE SPECIFIED - RESISTORS ARE 1/10W ±5% METAL GLAZE RESISTOR. ALL RESISTANCE VALUES ARE IN OHM(Ω). ALL CAPACITORS ARE CERAMIC CAPACITOR OR MYLAR CAPACITOR. ALL CAPACITANCE VALUES ARE IN #F(=pF). ALL INDUCTANCE VALUES ARE IN #H(=mH). ALL CAPACITORS ARE SHOWN IN THE FORM OF CAPACITANCE (#F)/RATED VOLTAGE (V). # POLYPROPYLENE CAPACITOR

To CN790 (SHEET 3)

To CN791 (SHEET 3)

■ DVD module section (1/2)



DV2.1

LVA10469-715A

(SHEET 9)

(SHEET 9)

(SHEET 9)

(SHEET 9)

(SHEET 9)

(SHEET 9)

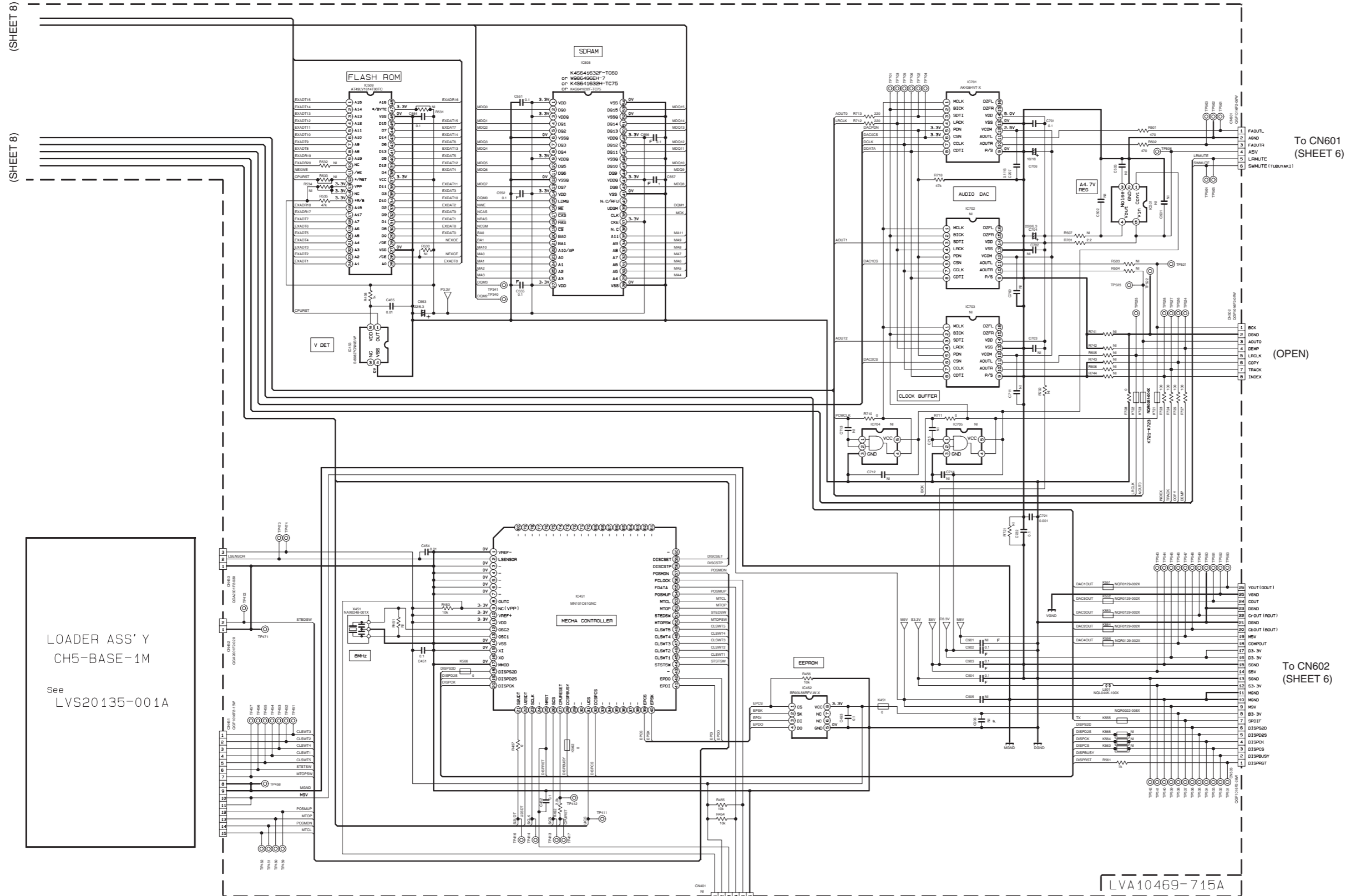
(SHEET 9)

(SHEET 9)

(SHEET 9)

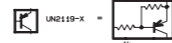
(SHEET 9)

DVD module section (2/2)



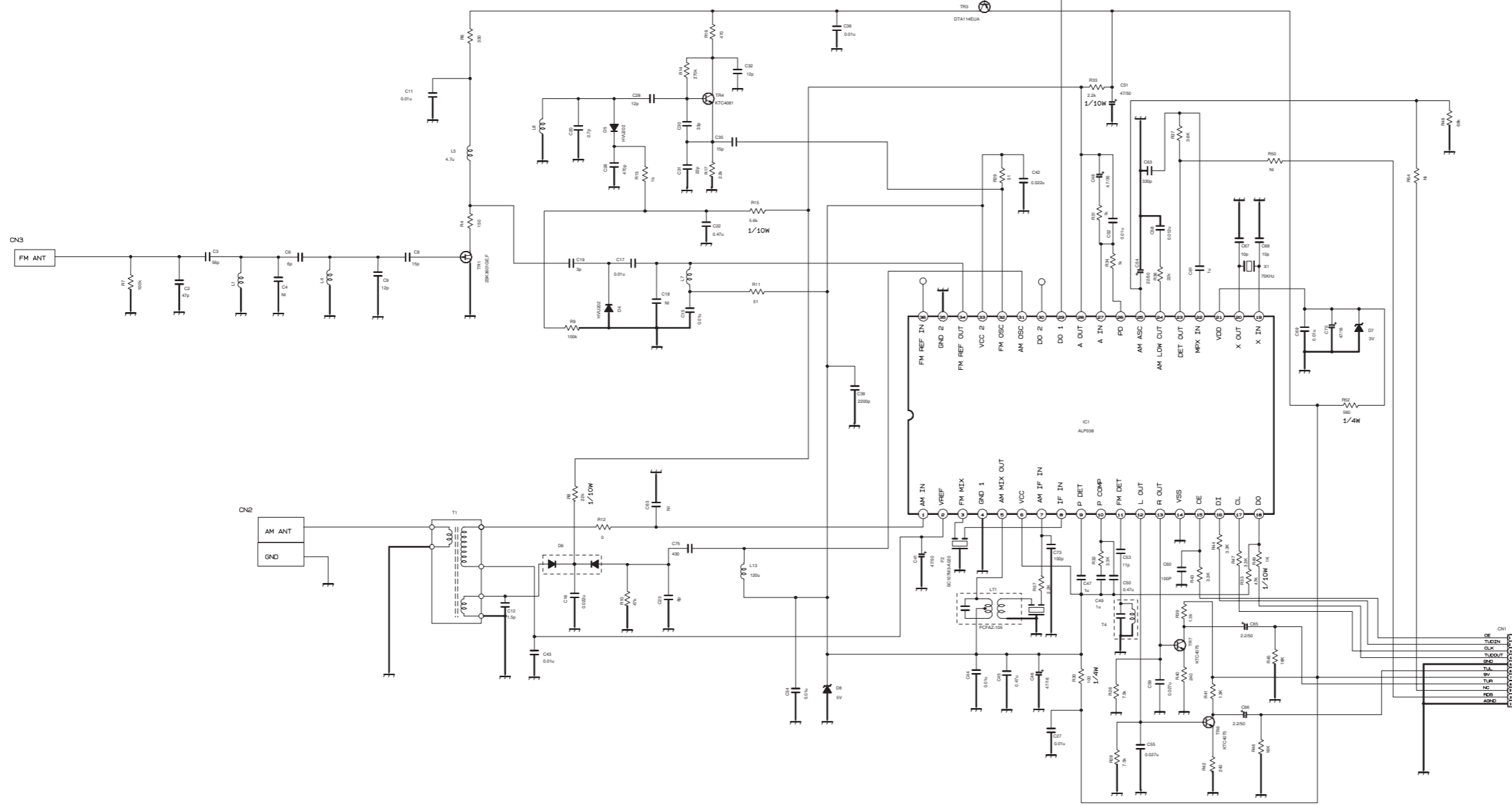
LOADER ASS'Y
CH5-BASE-1M
See
LVS20135-001A

NOTES

1. VOLTAGES ARE DC-MEASURED WITH A DIGITAL VOLT METER WITHOUT INPUT SIGNAL.
CONDITION --- A DVD disc in Tray1, STOP mode
2. UNLESS OTHERWISE SPECIFIED:
ALL RESISTORS ARE 1/10W ±5% METAL GLAZE RESISTOR, OR 0.2% METAL GLAZE RESISTOR.
ALL CAPACITORS ARE 50V, 25V, 16V, 10V OR 6.3V CERAMIC CAPACITOR.
ALL RESISTANCE VALUES ARE IN OHM(Ω).
ALL CAPACITANCE VALUES ARE IN PICO(F) (pF).
ALL C CAPACITORS ARE SHOWN IN THE FORM OF CAPACITANCE(μF)/RATED VOLTAGE (V).
ALL INDUCTANCE VALUES ARE IN MILLI(MH).
3. NI STANDS FOR NOT INSERTED PARTS.
4. DIGITAL TRANSISTOR
UNQ119-x =  for flash writer

■ Tuner RF / IF / FM multiplex section (UJ/UN/US/UW/UX)

QAU0346-001

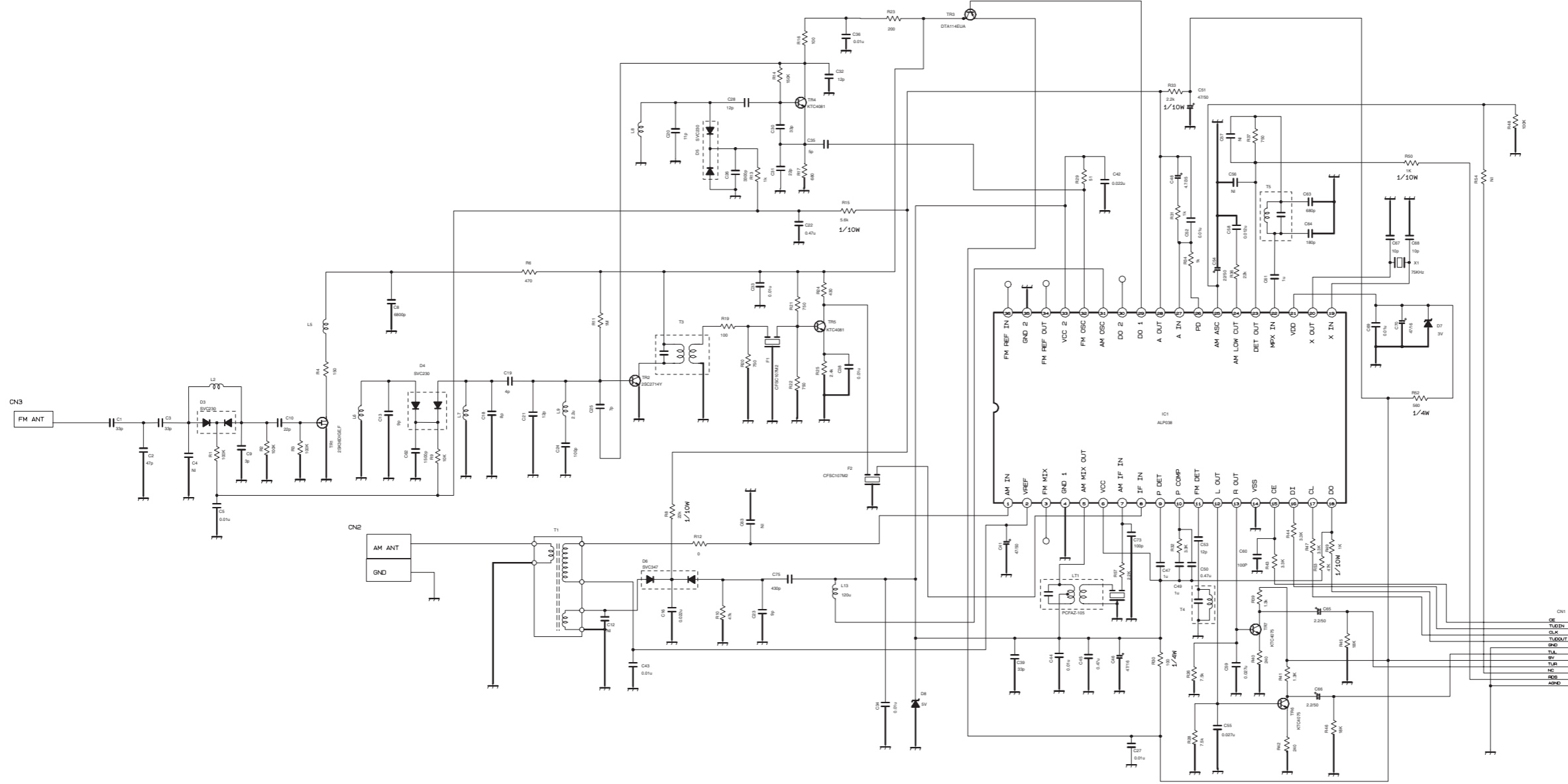


To CN766
(SHEET 3)

NOTES
1. UNLESS OTHERWISE SPECIFIED
ALL RESISTANCE VALUES ARE IN OHMS.
ALL CAPACITANCE VALUES ARE IN pF (µF).
ALL INDUCTANCE VALUES ARE IN nH (µH).
ALL CAPACITORS ARE SHOWN IN THE FORM
OF CAPACITANCE (µF)/RATED VOLTAGE (V).

■ Tuner RF / IF / FM multiplex section (A only)

QAU0347-001

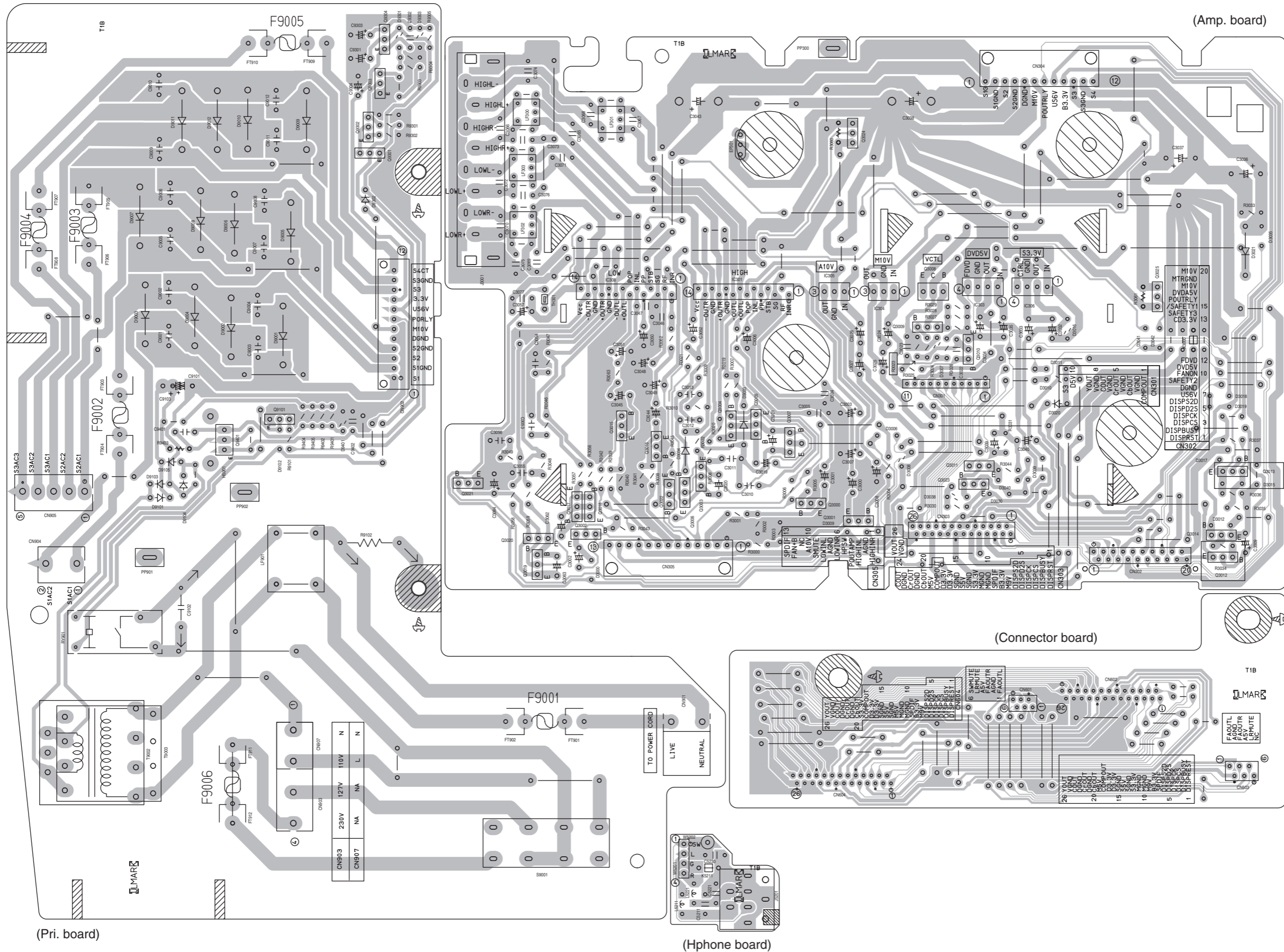


NOTES
 1. UNLESS OTHERWISE SPECIFIED
 ALL RESISTANCE VALUES ARE IN OHMS.
 ALL CAPACITANCE VALUES ARE IN pF (PPF).
 ALL INDUCTANCE VALUES ARE IN μH (PPH).
 ALL IC CHARACTERISTICS ARE SHOWN IN THE FORM
 OF CAPACITANCE (μF) / RATED VOLTAGE (V).

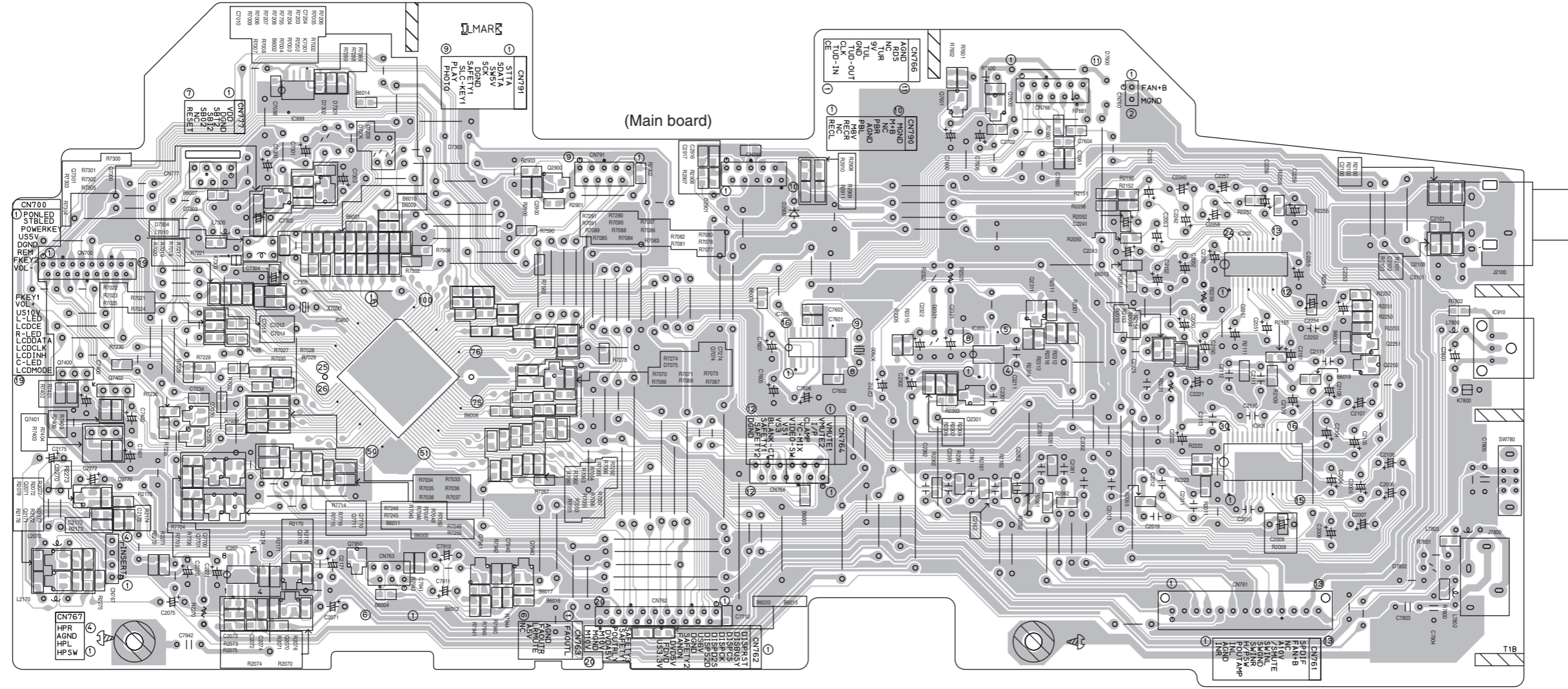
To CN766
 (SHEET 3)

Printed circuit boards

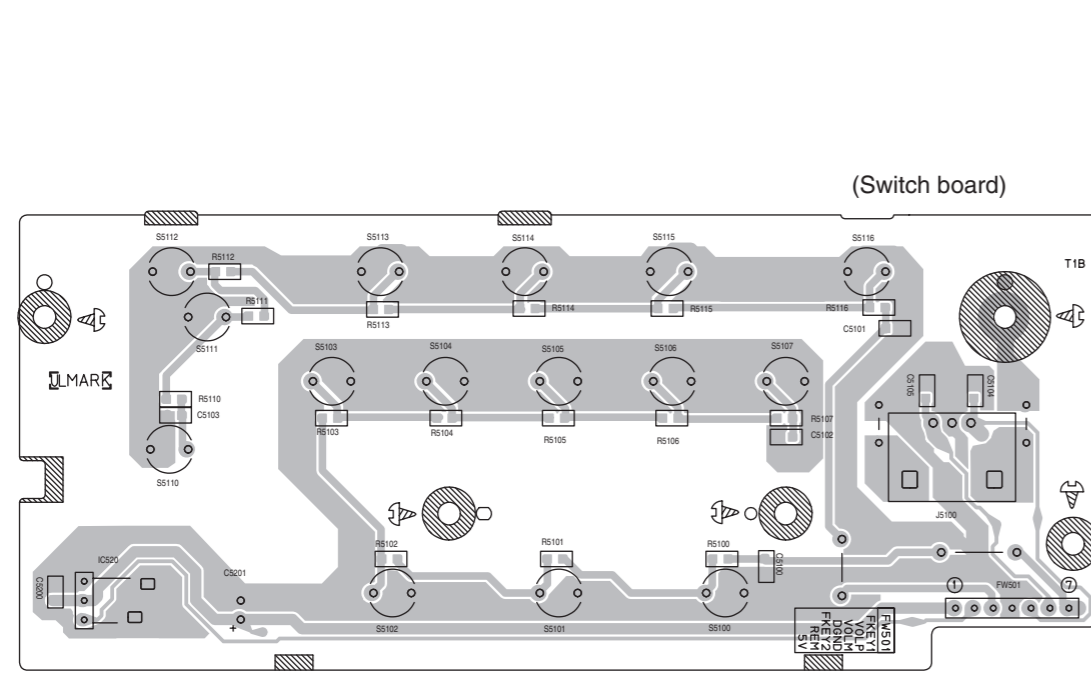
■ Main board



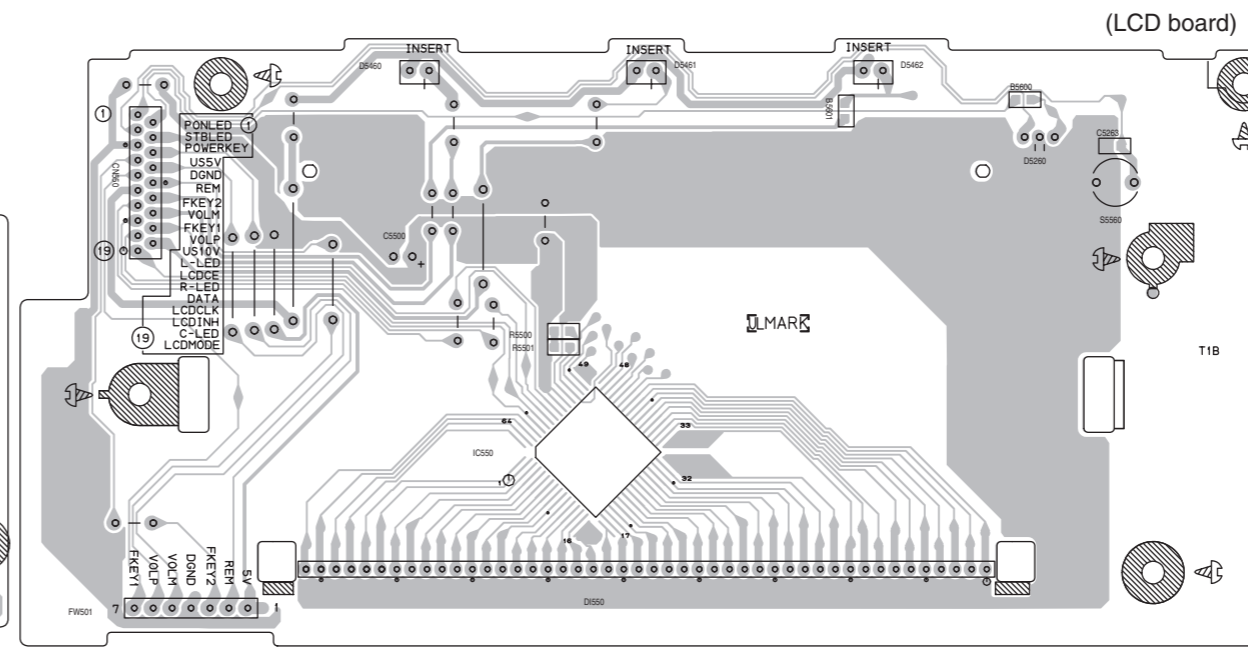
■ Micon board



(Main board)

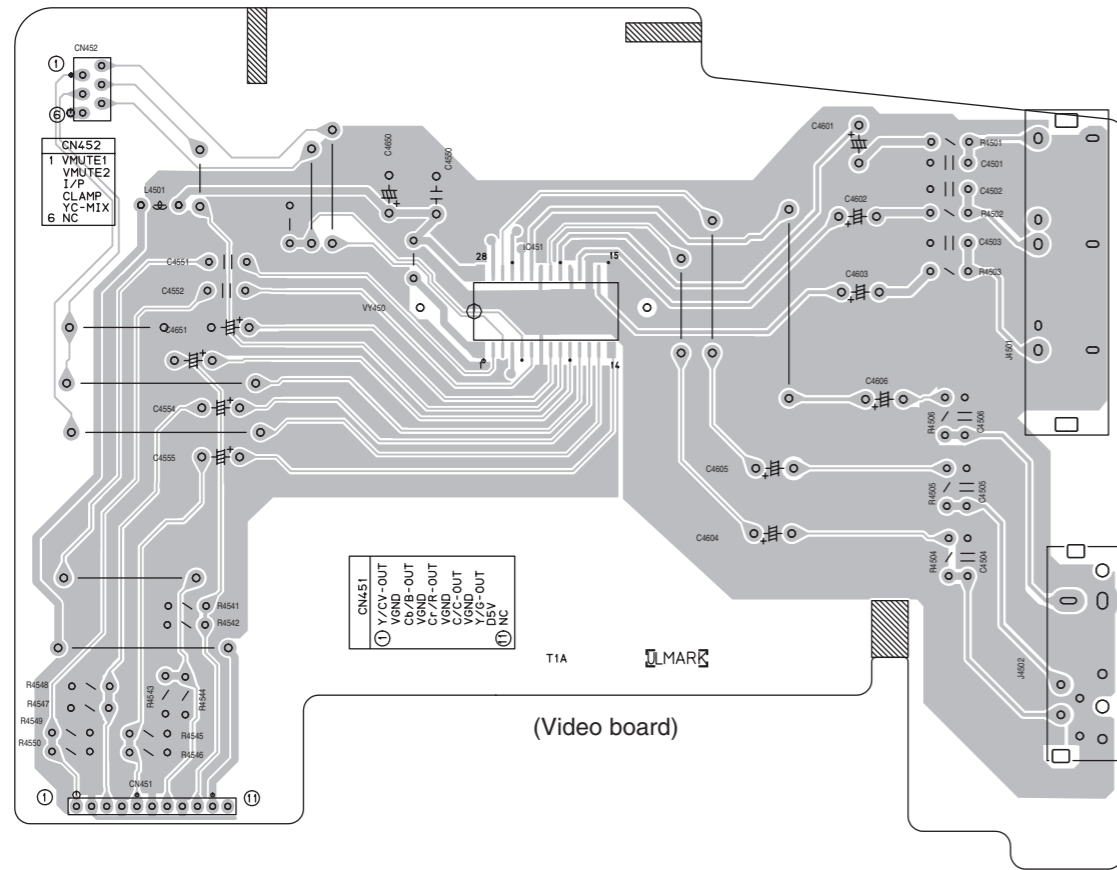


(Switch board)



(LCD board)

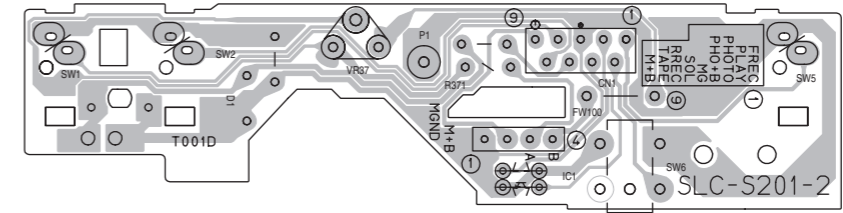
■ Video board



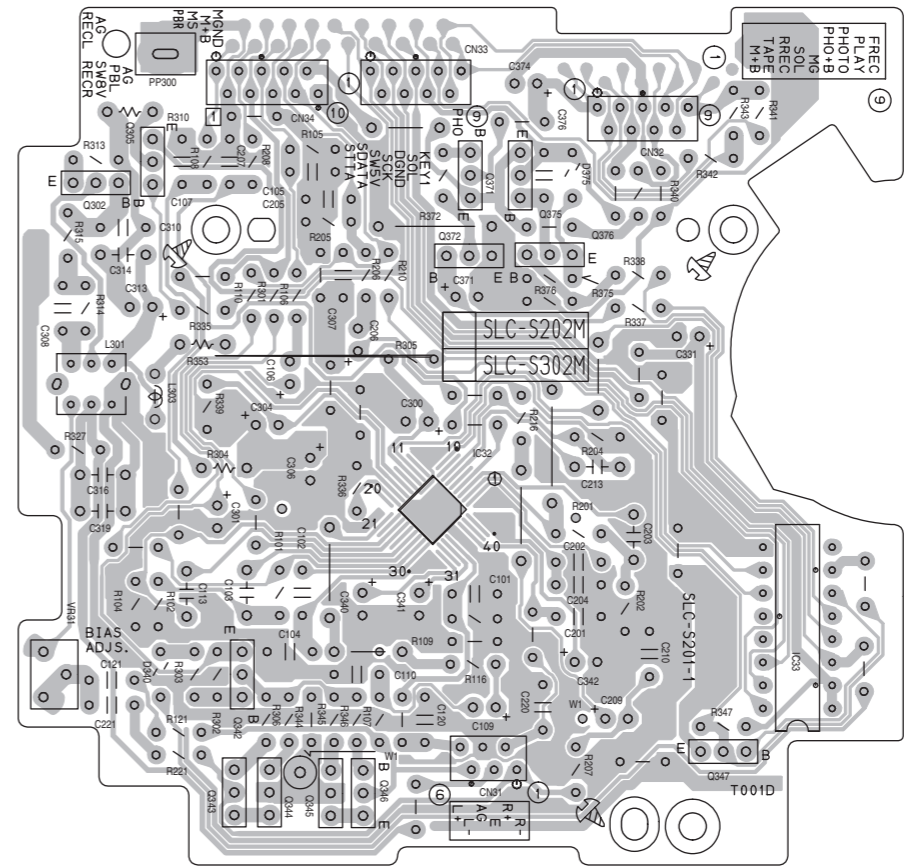
(Video board)

■ Cassette mechanism board

(Cassette loading board)

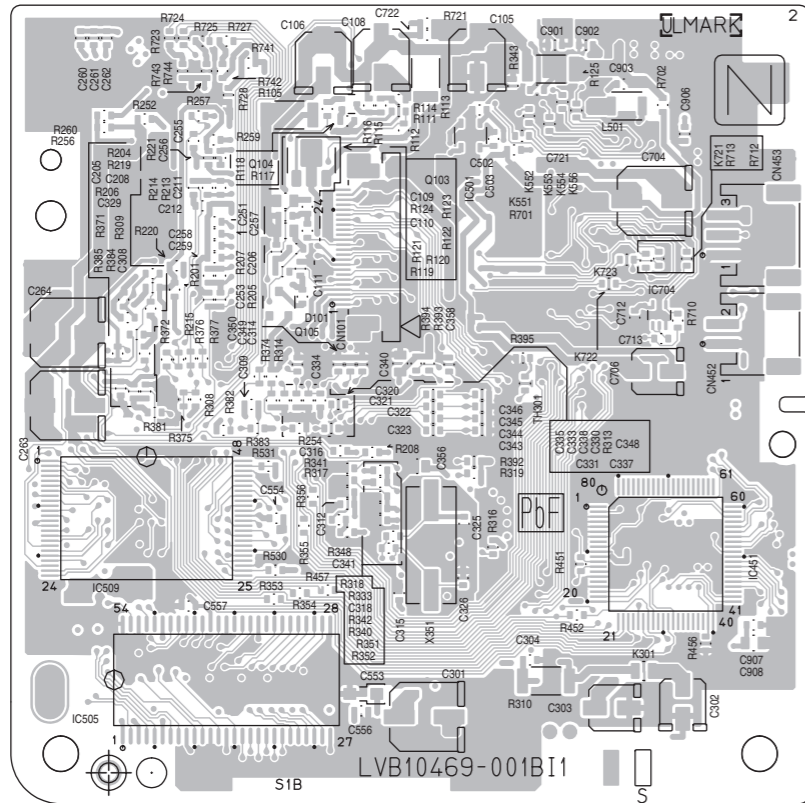


(Cassette control board)

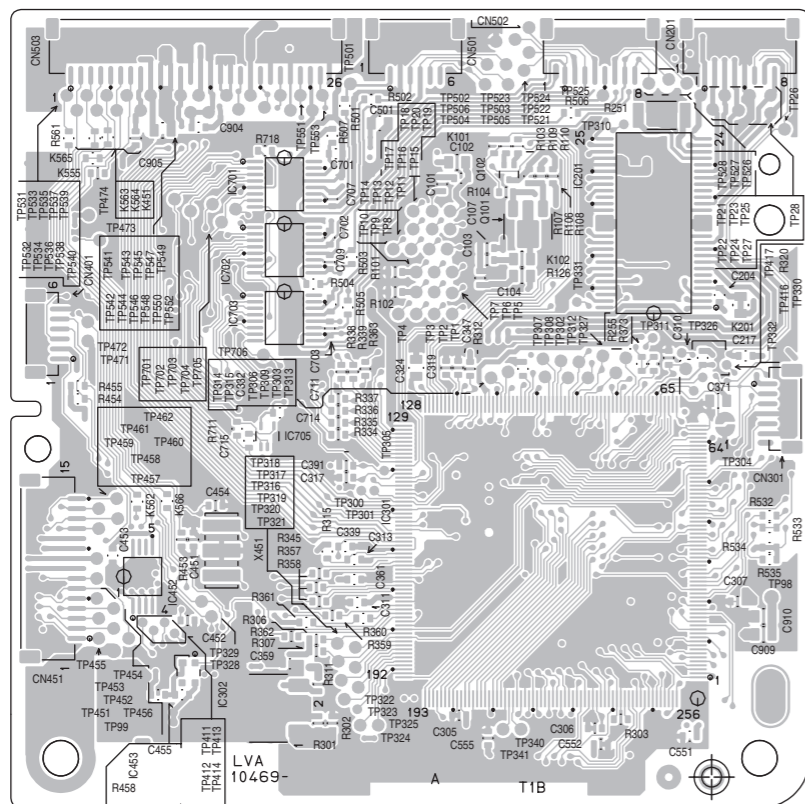


■ DVD servo board

Forward side

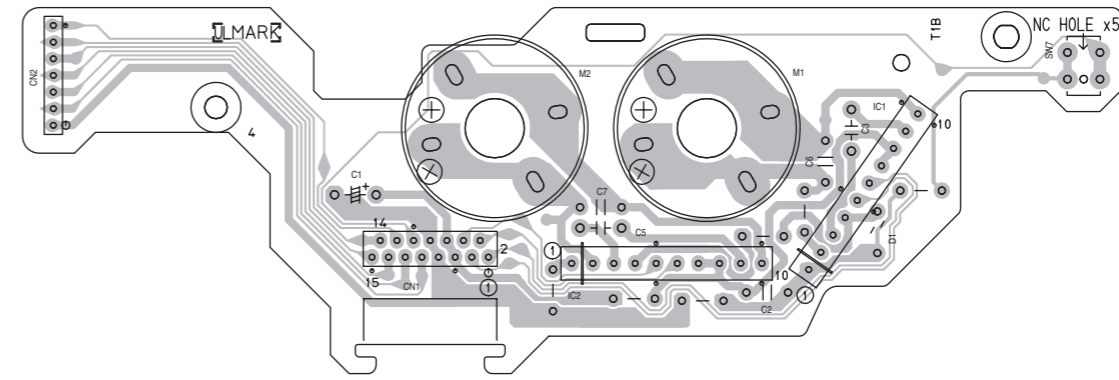


Reverse side

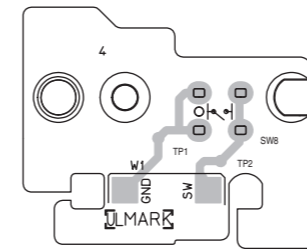


■ DVD switch board

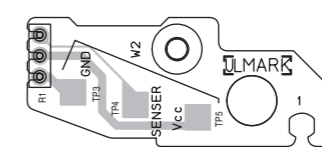
(Motor board)



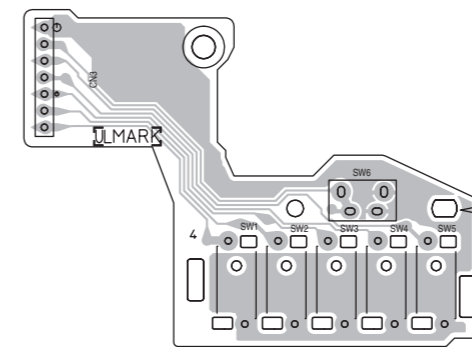
(Switch board)



(Sensor board)



(Tray switch board)



< MEMO >

JVC

Victor Company of Japan, Limited

AV & MULTIMEDIA COMPANY AUDIO/VIDEO SYSTEMS CATEGORY 10-1, 1chome, Ohwatari-machi, Maebashi-city, 371-8543, Japan

(No.MB230SCH)



Printed in Japan
WPC